

LiGO2 - Smart lighting control solutions

Flexible, cost-effective, and easily engineered lighting controls

Overview

The LiGO2 smart lighting control solution is based on the manufacturer-independent DALI and DALI-2 standards making it possible to create flexible, cost-effective and easy to engineer smart lighting systems.

LiGO2 is the latest hardware addition to our range of smart lighting control solutions, packed with the same control features and functionality found in our established LiGO+ device. LiGO2 is limited to a maximum of two DALI networks, with the use of an additional SIPslice DALI device; making it a perfect choice for apartments, smaller offices or for adding additional areas of buildings to an existing lighting control system.

The solution can function as a standalone system or as part of a larger interfaced system via the available BMS &/or IoT protocols. With a host of features including tunable white, Circadian Rhythm and RGBW colour control, it's easy to create an energy efficient and great looking office, apartment or feature areas.



LiGO2 control features



Key features:

- **Feature-Packed Control:** Packed with advanced control features, LiGO2 empowers you to optimise energy savings, extend the life of LED installations, and effortlessly manage lighting scenarios.
- **Versatile Compatibility:** LiGO2 operates seamlessly as a standalone system or integrates effortlessly with Building Management Systems (BMS) and IoT platforms, offering a comprehensive solution for diverse needs.
- **Perfect for Various Spaces:** Tailored for apartments, small offices, and expanding existing lighting systems, LiGO2 is the smart choice for creating efficient and aesthetically pleasing lighting designs.
- **Flexibility:** LiGO2 supports up to 64 devices via the network port with the option for connecting an additional 64 devices via the use of a SIPslice DALI device.
- **Out of the box:** LiGO2 includes embedded tools and a suite of pre-programmed smart lighting control algorithms to quickly group the luminaires, set the scene and optimally control LEDs to derive best performance and energy savings.
- **Tunable White** Adjust lighting colour temperature for different moods and activities.
- **Circadian Rhythm Control:** Enhance well-being by synchronising lighting with natural circadian rhythms.
- **RGBW Colour Control:** Infuse vibrant colours into your spaces, creating visually appealing environments.

LiGO2 hardware features and specifications

LiGO2 has been designed to be easy for an engineer install, configure and also be simple for the end user to operate the hardware includes:

- Built in 64 device network port
- Connection for an additional 64 devices added via the use of a SIPslice DALI device
- LEDs to show Power, Comms, Bus status etc.
- The compact design makes it ideal for small panels or enclosures
- Power over Ethernet (PoE)
- Optional BMS compatibility to TRENDS or BACnet systems
- Optional IoT compatibility to smart building systems
- Integrated DIN Rail mounting



Height: 60mm / Width: 45mm / Depth: 90mm

LiGO2 supported protocols include:

- DALI and DALI-2
- MQTT - supports AWS, Azure, Google IoT Core (supports publish/subscribe with a third party broker)
- REST Server - supports three REST client connections
- BACnet IP Server
- vIQ

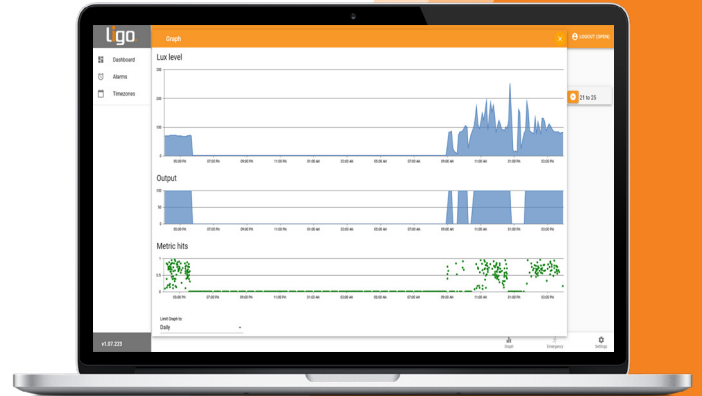
Commissioning and support

As with all Synapsys products and software solutions, Our LiGO2 hardware devices have been designed to be simple to deploy and use.

Our Commissioning engineers, Software and Technical support teams are available to support installation and set-up, right through to handover to the end user.

We also provide customers with access to our SIP Integrator support website, which contains all of our technical data sheets and information about our latest technical updates.

Through our SIP Integrator support website we also give customers access to our free tools which simplify the commissioning and configuration of our products, saving you time and money.



LiGO2 product range

Part No.	Description
LIGO2	LiGO2 Lighting Controller
LIGO2/Connect	LiGO2 Lighting Controller with Connection to BEMS & IoT

Want to know more?

If you would like to know more or have any questions about our LiGO2 hardware and its capabilities, please contact your local Synapsys Account Manager, call us on **01444 246 128** or email us at enquiries@synapsys-solutions.com.

For more information about Synapsys and our product range please visit www.synapsys-solutions.com.

© 2023, Synapsys Solutions Ltd, All rights reserved.

Synapsys Solutions Ltd
No. 1 Woodlands Court, Albert Drive,
Burgess Hill, West Sussex, RH15 9TN

T: 01444 246 128
E: enquiries@synapsys-solutions.com
W: www.synapsys-solutions.com

 **SYNAPSYS**
BUILDING INTELLIGENCE